

# arcplan Enterprise® Beyond Traditional Reporting



## All types of analysis – all data sources – one solution

arcplan Enterprise is a platform for the creation and distribution of highly customized business intelligence solutions. Customers and partners agree that it is the most flexible software available for the implementation of custom reporting and analysis solutions. Organizations across the globe have chosen arcplan Enterprise as their environment for rapidly deploying solutions without compromise – applications that become an integral part of managing corporate performance and streamlining operations.



The flexibility of arcplan Enterprise integrates a huge number of reports and analysis in a coherent application.

Pick from a wide variety of graphical functions, including chart animation.

## [ arcplan Enterprise – trial for free!

Want to test it risk-free? arcplan Enterprise is available as **Free Trial Edition** and gives you **30 days** to evaluate the product on your own infrastructure. Connect to your own data sources and more. Get technical support on our arc|community at: <http://community.arcplan.com>.

## [ Pull together data from your various sources

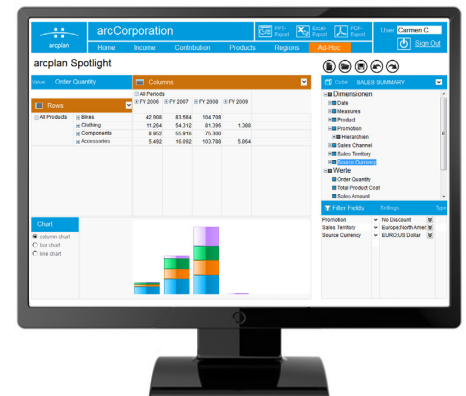
arcplan Enterprise provides bi-directional connectivity to various data sources, including SAP, SAP BW and SAP BW Integrated Planning. It also includes connectivity to Oracle (including any Oracle database, Oracle Essbase, Hyperion Financial Management), IBM (Cognos TM1, IBM DB2 UDB, DB2 Cubing Services), Microsoft (SQL Server & Microsoft Analysis Services), Paris Technologies PowerOLAP, Teradata any ODBC, OLE DB, XMLA, XML or any Web-service / SOA with an open API.

## From departmental to enterprise wide use – start small and continuously grow, without any limitations from the software.

Users need the ability to create standard reports, dashboards, ad-hoc analysis, scorecards, what-if-scenarios, forecasts, and predictions from their data. But the data for these types of analysis is often spread across various sources. Does this mean that you need a specific tool for every reporting requirement?

Not if you choose arcplan Enterprise as your business intelligence platform. It is flexible and adapts to all data requirements. With arcplan Enterprise, organizations can:

- Create **reports, dashboards, ad-hoc analysis, scorecards, what-if-scenarios, and forecasts**
- Define **personalized user interfaces** and analytical functions for dedicated user groups, e.g. the management board, divisional heads, members of financial staff, or other operative contributors
- Integrate analytical solutions in every IT environment and on top of every data source, e.g. **SAP, Oracle, IBM, Microsoft**, etc.
- Run queries against **data warehouses and operational databases** at the same time
- **Write back data** into the data source for planning and forecasting
- Integrate Web 2.0 services for sophisticated **mash-up solutions**
- **Involve SOA processes** - as data sources as well as workflow triggers
- Deploy just one business intelligence platform enterprise-wide – complete but with a small footprint
- **Decrease total cost of ownership** by integrating into the existing IT infrastructure



arcplan Spotlight is the self-service analysis solution that enables users to analyze information from various perspectives very easily.

**SAP® Certified**  
Integration with SAP NetWeaver®



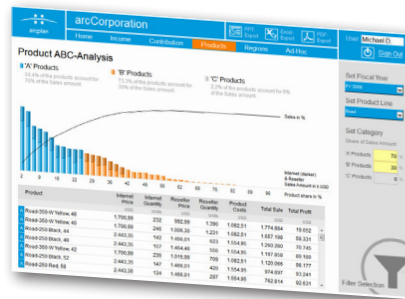
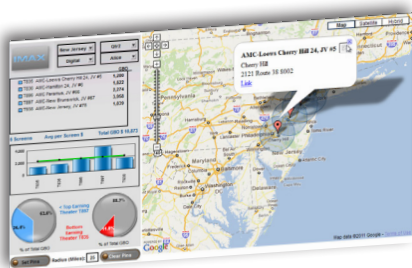
# arcplan Enterprise®

flexible – powerful – complete – efficient



## Key features

- Custom report development and analysis through the central arcplan Application Designer
- Graphical user interface for creating financial reports, dashboards, scorecards, budgeting and planning, and analysis solutions
- arcplan Spotlight: Ad-hoc analysis in a web browser interface
- Drag and drop connectivity to more than 20 different data sources – relational and multidimensional – with bi-directional data communication including write-back
- Automatic alerting based on thresholds
- Chart animation for high-level dashboards
- Multiple printing and exporting options, including collated executive briefing books in PDF or PowerPoint
- Analytics access via mobile devices, such as iPhone, iPad, Blackberry, and Android phones
- Enterprise scalability that supports distributed deployments across the enterprise
- Integrated server-based user management for central access control and simple multi-tenancy deployments
- Shared query cache (in-memory analysis) to use query results for multiple users
- Single sign-on by integrating into Windows or LDAP authentication
- SOA-enabled, with full support of web services and other open standards
- Spreadsheet add-in for Microsoft Office experts, via arcplan Excel Analytics®
- Runs on every standard web server which runs CGI components, 32 or 64-bit on Windows



arcplan's open architecture facilitates sophisticated analytical applications with professional virtualization, integration of mash-ups, chart animations, and interactive drilldown functionalities.

## Benefits

- **Scalability:** arcplan Enterprise is well suited for departmental as well as enterprise-wide usage.
- **Graphical user interface:** Users from every department can create their own reports.
- **High flexibility:** Once deployed, the solution can grow with your requirements.
- **Open interfaces:** Financial consolidation can be achieved without technical boundaries, e.g. after acquisitions.
- **Fast implementation:** Small footprint software.
- **Security:** Existing security concepts can easily be connected.
- **Investment protection:** Open architecture enables integration into every IT environment.
- **Low Total Cost of Ownership**

## [ About arcplan

arcplan is a leader in innovative Business Intelligence, Dashboard, Corporate Performance and Planning software solutions for desktop and mobile use. Since 1993, arcplan has enabled more than 3,000 customers worldwide to leverage their existing infrastructure and achieve organizational efficiency through the powerful combination of analysis, insight and collaboration. Simply put: *We make organizations perform better.*

More information at [www.arcplan.com](http://www.arcplan.com).

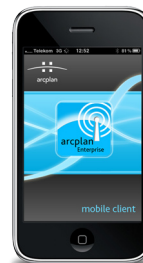
arcplan's flagship product arcplan Enterprise® was rated the #1 3rd party tool for SAP BW, Oracle Essbase, and IBM Cognos TM1 in The BI Survey 9 (2010).

## [ In use all over the world

arcplan Enterprise® is currently used by companies worldwide for data analysis, reporting, and planning. Here are a few of our clients:

- |                |                     |
|----------------|---------------------|
| AIG            | Lufthansa           |
| ADAC           | Migros              |
| BASF           | Pfizer              |
| Bayer          | Samsung             |
| Beiersdorf     | Turner Broadcasting |
| CERN           | UBS                 |
| Daimler        | Vallant             |
| EnBW           | Vion                |
| Gruner & Jahr  | Vodafone            |
| LG Electronics | Wendy's             |

For more details on the product and its availability visit [www.arcplan.com/enterprise](http://www.arcplan.com/enterprise) or contact our sales team at [sales@arcplan.com](mailto:sales@arcplan.com).



All arcplan Enterprise applications can be made available on various smart-phones using arcplan Mobile. Learn more at: [www.arcplan.com/freemobilebi](http://www.arcplan.com/freemobilebi)

